

PLUMBING ROUGH-IN SCHEDULE

NOTES: (APPLIES TO ALL PLUMBING FIXTURES LISTED BELOW)
 1) SIZES SHOWN ARE MINIMUMS. LARGER SIZES SHOWN ON THE DRAWING SHALL DICTATE THE ROUGH-IN SIZE. 2) SANITARY RISERS UP IN WALL TO FIXTURES SHALL BE A MINIMUM OF 2". 3) DOMESTIC WATER BRANCH PIPING OUTSIDE OF THE WALL/CHASE SHALL BE A MINIMUM OF 3/4" UNLESS NOTED OTHERWISE. ONLY THE FINAL RISE-DROP SHALL BE SMALLER. 4) FINAL SANITARY SIZE SHALL MATCH P-TRAP SIZE (REFER TO MATERIAL LIST).

TAG NAME	DESCRIPTION	TRAP	COLD WATER	HOT WATER	SANITARY	VENT
FD-1	3" FD				3"	1 1/2"
FD-2	4" FD				4"	2"
FS-1	3" FS				3"	1 1/2"
HR-1	HOSE STATION		1/2"	1/2"	-	-
SK-1	HANDWASHING SINK		1/2"	1/2"	1 1/2"	1 1/2"
SK-2	TRIPLE SINK		1/2"	1/2"	-	-
UB-1	UTILITY BOX		1/2"	-	-	-
UB-2	UTILITY BOX (WASHING MACHINE)		3/4"	-	2"	1 1/2"

PLUMBING MATERIAL LIST

TAG NAME	DESCRIPTION	MANUFACTURER AND MODEL
CP-1	CIRCULATING PUMP - VARIABLE SPEED CONTROLLER WITH SETTINGS TO ADJUST AND MAINTAIN A CONSTANT SPEED PUMP - GRUNDFOSS (ALPHA2 15-55FPLC), B&G (ECOCIRC SERIES), ARMSTRONG (FIXED PRESSURE), OR PROPORTIONAL PRESSURE. LEAD FREE BRONZE OR STAINLESS STEEL CONSTRUCTION, PERMANENTLY LUBRICATED SEALED BEARINGS, MECHANICAL SEAL, OIL LUBRICATED, ECM MOTOR WITH INTEGRATED VARIABLE SPEED CONTROL, FLANGED CONNECTIONS, RATED FOR 125 PSIG AT 225°F, UL LISTED. 8 GPM @ 10 FEET OF HEAD. ELECTRICAL REQUIREMENTS - HARD-WIRE	
FCO-1	FLOOR CLEANOUT - ADJUSTABLE, CAST IRON HOUSING, ANCHOR FLANGE, TAPERED THREAD PLUG, SECURED NICKEL BRONZE TOP. TOP STYLE SHALL MATCH FLOOR FINISH AS FOLLOWS: UNFINISHED FLOOR - ROUNDOFF SCORATED TOP TILE OR TERRAZZO - ROUND RECESSED TOP	ZURN (Z1400), JOSAM (55000), MIFAB (C1100), SMITH (4000), WADE (6000), WATTS (CO-200)
FD-1	FLOOR DRAIN - CAST IRON BODY, NICKEL BRONZE ADJUSTABLE TOP, 8" ROUND, 3" BOTTOM OUTLET, FLASHING COLLAR	FLOOR DRAIN - ZURN (Z-415), SMITH (2005), WADE (1100), JOSAM (30000), WATTS (FD-100), MIFAB (F1100), SUN (FD1000)
FD-2	FLOOR DRAIN - CAST IRON BODY WITH FLEXIBLE DIAPHRAGM, SEALING GASKETS, RECLOSERS AND SEALS WHEN DISCHARGE IS COMPLETED, ASSE 1072	TRAP SEAL - SURE SEAL (SS), PROVENT (TRAP GUARD), SMITH (QUAD CLOSE), GREEN DRAIN, MIFAB (MI-GARD), ZURN (Z1072)
FS-1	FLOOR SINK - CAST IRON BODY, NICKEL BRONZE ADJUSTABLE TOP, 8" ROUND, 4" BOTTOM OUTLET, FLASHING COLLAR	FLOOR DRAIN - ZURN (Z-415), SMITH (2005), WADE (1100), JOSAM (30000), WATTS (FD-100), MIFAB (F1100), SUN (FD1000)
GI-1	FLOOR SINK - CAST IRON BODY, NICKEL BRONZE RIM AND GRATE, 12" SQUARE, 3" BOTTOM OUTLET, 6" DEEP RECEPTOR WITH ALUMINUM DOME STRAINER, ACID RESISTANT COATED INTERIOR, SEEPAGE FLANGE WITH CLAMP	TRAP SEAL - SURE SEAL (SS), PROVENT (TRAP GUARD), SMITH (QUAD CLOSE), GREEN DRAIN, MIFAB (MI-GARD), ZURN (Z1072)
GR-1	GREASE INTERCEPTOR - UNDERGROUND INSTALLATION. POLYETHYLENE, HDPE, OR FIBERGLASS REINFORCED POLYESTER CONSTRUCTION. REMOVABLE OR CLEANABLE INTAKE AND DISCHARGE BAFFLES, INTERNAL FLOW CONTROL, FITTING IF NECESSARY FOR OPERATION, GASKETED COVER, PDI G101 OR ASME A112.14.3 COMPLIANT, 30 YEAR WARRANTY. PROVIDE RISERS FOR EXTENDING COVER TO GRADE. PROVIDE TWO-WAY CLEANOUTS UPSTREAM AND DOWNSTREAM OF GREASE INTERCEPTOR. PROVIDE TANK HOLD DOWN SYSTEM AS REQUIRED BY MANUFACTURER FOR THE SOIL TYPE AND WATER TABLE. BASIS OF DESIGN SCHIER UNIT DOES NOT REQUIRE TANK OR FLOW CONTROL VENT PIPING. OTHER GREASE INTERCEPTOR MANUFACTURERS MAY REQUIRE TANK AND FLOW CONTROL, FITTING VENT SYSTEMS. THESE ADDITIONAL SYSTEMS SHALL BE INSTALLED BY THE CONTRACTOR AT NO ADDITIONAL COST TO THE PROJECT IF THESE ALTERNATIVE PRODUCTS ARE SUBMITTED AND INSTALLED. 75 GPM FLOW, 861 LB. GREASE CAPACITY, 125 GALLONS HOLDING CAPACITY, 4" PIPE INLET AND OUTLET.	GREASE INTERCEPTOR - SCHIER (GREAT BASIN GB-75), MIFAB (BIG SERIES), ZURN (KITCHEN TURTLE (PROCEPTOR))
HR-1	HOSE REEL BOX BY KITCHEN CONTRACTOR	
SK-1	SINK - PROVIDED AND INSTALLED BY KITCHEN CONTRACTOR. ROUGH IN BY PLUMBING CONTRACTOR. ACCESSORIES - QUARTER-TURN BALL VALVE TYPE 3/8" CHROME-PLATED BRASS ANGLE SUPPLIES WITH STOPS.	
SK-2	SINK - PROVIDED AND INSTALLED BY KITCHEN CONTRACTOR. ROUGH IN BY PLUMBING CONTRACTOR. ACCESSORIES - QUARTER-TURN BALL VALVE TYPE 3/8" CHROME-PLATED BRASS ANGLE SUPPLIES WITH STOPS.	
TD-1	TRENCH DRAIN BY KITCHEN CONTRACTOR	
UB-1	UTILITY BOX - UNPAINTED GALVANIZED STEEL OR WHITE PAINTED STEEL ENCLOSURE, MATCHING FACEPLATE, ANGLE VALVE WITH 1/4" COMPRESSION OUTLET, INTREGAL WATER HAMMER ARRESTOR	GUY GRAY (BIM875AB), OATEY (39144 WITH 38686 FACEPLATE)
UB-2	UTILITY BOX - WHITE PAINTED STEEL ENCLOSURE, MATCHING FACEPLATE, ANGLE VALVE WITH 3/8" COMPRESSION OUTLET, INTREGAL WATER HAMMER ARRESTOR, 2" DRAIN CONNECTION. PROVIDE WITH P-TRAP ON DRAIN CONNECTION	GUY GRAY (88436)
WCO-1	WALL CLEANOUT - END CAP, CAST IRON ACCESS BODY, GAS AND WATERTIGHT BRONZE OR BRASS THREADED PLUG, WANDAL RESISTANT ROUND STAINLESS STEEL ACCESS COVER, EXTENDED MACHINE SCREW.	ZURN (Z-1411), SMITH (4422), WADE (W-8480-R8550), JOSAM (58600-CO), WATTS (CO-300-RD), MIFAB (C1450-RD)
YCO-1	YARD CLEANOUT - ROUND, DURA-COATED CAST IRON, SIZE AS LISTED ON DRAWINGS, DOUBLE FLANGED HOUSING, HEAVY DUTY SECURED SCORATED DURA-COATED CAST IRON COVER, LIFTING DEVICE. BRONZE CLEANOUT PLUG WITH GAS/WATER-TIGHT SEAL.	ZURN (Z1474), SMITH (4261), WADE (8401), JOSAM (58680), WATTS (CO-300-MF), MIFAB (C1300-MF)

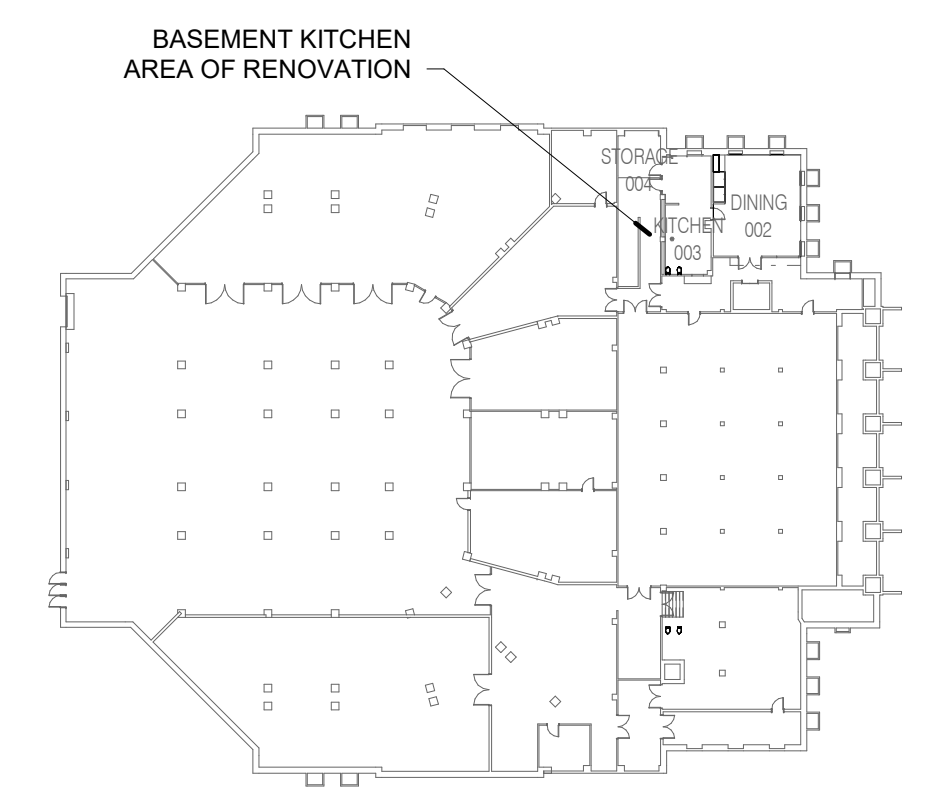
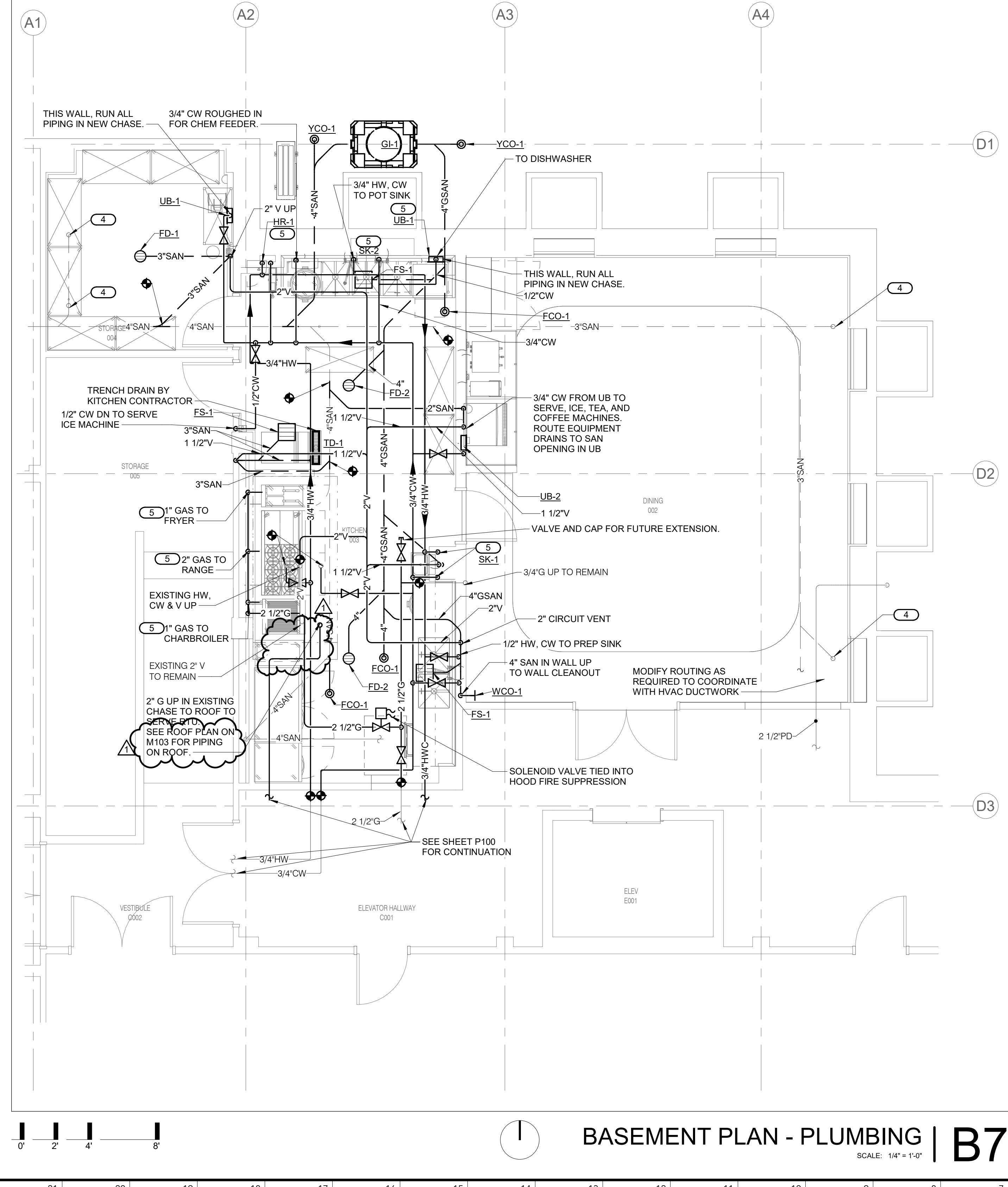
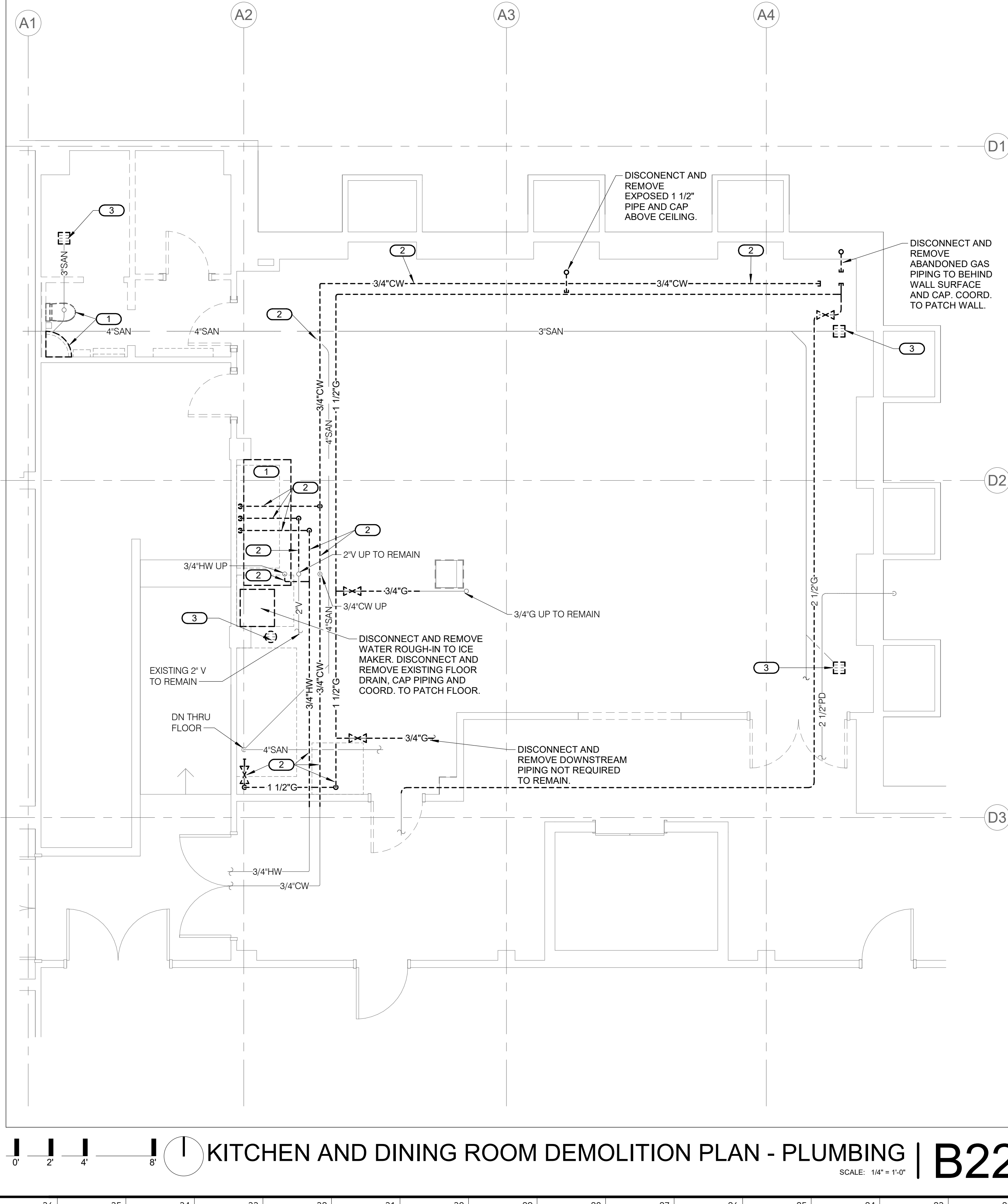
SHEET NOTES:
 1. REFER TO SHEET PM000 FOR SYMBOLS ABBREVIATIONS AND GENERAL NOTES.
 2. COORDINATE VERY CAREFULLY WITH EXISTING CONDITIONS AND OTHER TRADES BEFORE ROUTING AND FABRICATION.

KEYNOTES:
 1. DISCONNECT AND REMOVE EXISTING PLUMBING FIXTURE AND ASSOCIATED DOMESTIC WATER, SANITARY WASTE AND VENT PIPING NOT REQUIRED TO REMAIN AND CAP AT MAINS. COORDINATE TO PATCH WALL, FLOOR AND CEILING PENETRATIONS.
 2. DISCONNECT AND REMOVE EXISTING PIPING AND SUPPORTS NOT REQUIRED TO REMAIN. CAP PIPING AT MAINS.
 3. DISCONNECT AND REMOVE EXISTING FLOOR DRAIN NOT REQUIRED TO REMAIN. PLUG SANITARY PIPING BELOW FLOOR AND PATCH FLOOR AS REQUIRED TO MATCH EXISTING.
 4. CAPPED AND ABANDONED SANITARY PIPING BELOW SLAB.
 5. PROVIDE ISOLATION VALVES AT BRANCH PIPING TO KITCHEN EQUIPMENT.

PIPE INSULATION SCHEDULE (PLUMBING)

GENERAL NOTES:
 1. REFER TO THE SPECIFICATIONS FOR TYPE DESCRIPTIONS AND JACKETING REQUIREMENTS. VALUES LISTED BELOW ARE BASED ON ASHRAE / IECC REQUIREMENTS.
 2. TYPE A INSULATION IS NOT ALLOWED IN NON-AIR CONDITIONED SPACES, SUCH AS MECHANICAL ROOMS, EXTERIOR, ATTICS, ETC.
 3. TYPE B INSULATION GREATER THAN 1" THICK SHALL BE INSTALLED USING MULTIPLE LAYERS OF 3/4" OR 1" WITH STAGGERED SEAMS.
 4. TYPE E IS NOT ALLOWED IN RETURN AIR PLenums, UNLESS LISTED AND LABELED AS 25/50 RATED PER ASTM E84/UL723
 5. TYPE G 4" SHALL BE INSTALLED IN TWO (2) LAYERS WITH STAGGERED SEAMS.
 6. PROVIDE RIGID INSERT AT HANGERS, EITHER PRE-MANUFACTURED COUPLINGS (REFER TO PIPE HANGER AND SUPPORTS SPECIFICATIONS) OR TYPE C, D, OR E INSULATION. SEE SPEC. FOR MORE DETAILS.
 7. DIRECT BURIED PIPING SHALL ONLY USE TYPE C OR TYPE E. REDUCTION IN THICKNESS FOR DIRECT BURIED PIPING IS ALLOWED PER ASHRAE / IECC AS APPLICABLE.

PIPE SYSTEM	INSULATION TYPE	INSULATION THICKNESS PER NOMINAL PIPE OR TUBE SIZE					NOTES
		< 1"	1" TO < 1.5"	1.5" TO < 4"	4" TO < 6"	≥ 6"	
22 PLUMBING - WASTE							
SAN - SANITARY DRAINAGE	A (GlsFbr), B (Elasto), E (Physo), F (Phenol)	0.5"	0.5"	1"	1"	1"	APPLY INSULATION ONLY TO FLOOR DRAIN BODY, P-TRAP AND 10' DOWNSTREAM AT LOW TEMP DRAIN DISCHARGE (5 DEG AND LOWER IE: COOLING COIL CONDENSATE, ICE MACHINE DRAINS, ETC.)
V - VENT	A (GlsFbr), B (Elasto), E (Physo), F (Phenol)	0.5"	0.5"	1"	1"	1"	APPLY INSULATION ONLY WITHIN 10' OF EXTERIOR PENETRATION
22 PLUMBING - WATER							
CW - COLD WATER - POTABLE	A (GlsFbr), B (Elasto), E (Physo), F (Phenol)	0.5"	0.5"	1"	1"	1"	
HW - HOT WATER - POTABLE	A (GlsFbr), B (Elasto), E (Physo), F (Phenol)	1"	1"	1.5"	1.5"	1.5"	
HWC - HOT WATER CIRCULATING - POTABLE	A (GlsFbr), B (Elasto), E (Physo), F (Phenol)	1"	1"	1.5"	1.5"	1.5"	



UNIFIED GOVERNMENT MEMORIAL HALL KITCHEN & AUDIO/VISUAL RENOVATIONS
 ISSUED FOR BID

600 N. 7TH ST TRFY
 KANSAS CITY, KANSAS 66101

DATE: 03/20/2025
 PROJ. NO.: B41456
 DESIGNED BY: CSB
 DRAWN BY: CSB
 CHECKED BY: SGB
 APPROVED BY: SGB

SEAL:
 GREGG BRADEN
 LICENSED PROFESSIONAL ENGINEER
 KANSAS
 11632
 3/27/2025
 STUART BRADEN - ENGINEER
 KS# 11632

NO.	REVISION	SUBMISSION	DATE
0	ISSUED FOR BID		03/27/2025
1	ADDENDUM #1		04/11/2025

ENLARGED BASEMENT PLANS - PLUMBING

P100.1